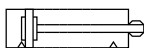




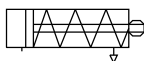
Características

- Especiales para espacios reducidos
- Fabricados en Aluminio
- Modelos con embolo magnético para control de posición
- Vástago con rosca hembra
- No requieren lubricación

Doble efecto



Simple efecto



Datos Técnicos

Fluido:

Aire comprimido Filtrado,
lubricado o no lubricado

Presión de Trabajo:

Doble efecto:
1 a 9 Bar ~ 14 a 130 PSI

Simple efecto:
2 a 9 Bar ~ 28 a 130 PSI

Temperatura de Trabajo:

-5°C a 70°C ~ 23°F a 158°F

Amortiguación:

Elástica

Materiales

Cuerpo:

Aleación de Aluminio

Vástago:

Acero al carbón con 20µ de
superficie cromo-endurecida

Empaques:

Goma nitrílica

Modelos Standard / Doble Efecto

| Carrera | Diametro del cilindro en milímetros | | | | |
|-----------|-------------------------------------|--------|--------|---------|---------|
| | 12 | 16 | 20 | 25 | 32 |
| 5 mm | CC1205 | | | | |
| 10 mm | CC1210 | CC1610 | CC2010 | CC2510 | CC3210 |
| 15 mm | CC1215 | CC1615 | CC2015 | CC2515 | CC3215 |
| 20 mm | CC1220 | CC1620 | CC2020 | CC2520 | CC3220 |
| 25 mm | CC1225 | CC1625 | CC2025 | CC2525 | CC3225 |
| 30 mm | | | CC2030 | CC2530 | CC3230 |
| 40 mm | | | CC2040 | CC2540 | CC3240 |
| 50 mm | | | | CC2550 | CC3250 |
| 75 mm | | | | CC2575 | CC3275 |
| 100 mm | | | | CC25100 | CC32100 |
| Ø Vástago | 6 mm | 8 mm | 10 mm | 12 mm | 16 mm |
| Conexión | M5 | M5 | M5 | M5 | 1/8" |

| Carrera | Diametro del cilindro en milímetros | | | | |
|-----------|-------------------------------------|---------|--------|--------|---------|
| | 40 | 50 | 63 | 80 | 100 |
| 10 mm | CC4010 | CC5010 | | | |
| 15 mm | CC4015 | CC5015 | CC6315 | CC8015 | CC10015 |
| 20 mm | CC4020 | CC5020 | | | |
| 25 mm | CC4025 | CC5025 | CC6325 | CC8025 | CC10025 |
| 30 mm | CC4030 | CC5030 | | | |
| 40 mm | CC4040 | CC5040 | | | |
| 50 mm | CC4050 | CC5050 | CC6350 | CC8050 | CC10050 |
| 75 mm | CC4075 | CC5075 | | | |
| 100 mm | CC40100 | CC50100 | | | |
| Ø Vástago | 16 mm | 20 mm | 20 mm | 25 mm | 32 mm |
| Conexión | 1/8" | 1/4" | 1/4" | 3/8" | 3/8" |

Modelos Standard / Simple Efecto

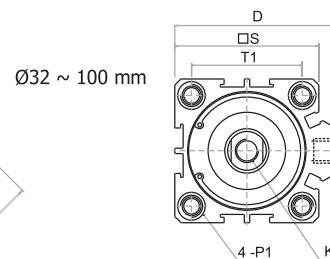
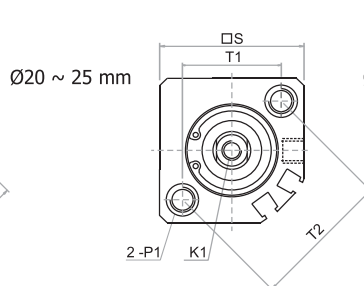
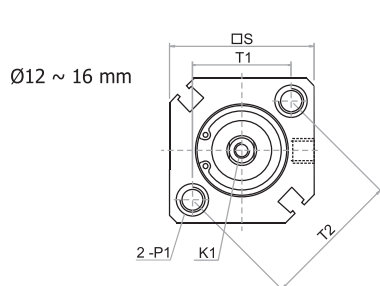
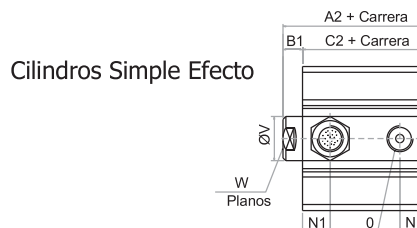
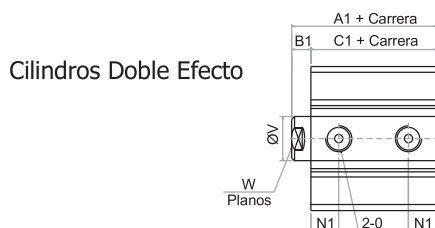
| Carrera | Diametro del cilindro en milímetros | | | | |
|---------|-------------------------------------|---------|---------|---------|---------|
| | 12 | 16 | 20 | 25 | 32 |
| 15 mm | CCR1215 | CCR1615 | CCR2015 | CCR2515 | CCR3215 |
| 25 mm | CCR1225 | CCR1625 | CCR2025 | CCR2525 | CCR3225 |

* Para carreras no standard y cilindros de doble vástago consulte con su distribuidor

CILINDROS COMPACTOS

SERIE CC

Art

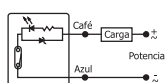


| Diámetro | A1 | A2 15mm | A2 25mm | B1 | C1 | C2 15mm | C2 25mm | D | K1 |
|----------|------|---------|---------|-----|------|---------|---------|-------|-----|
| 12 mm | 31,5 | 41,5 | - | 3,5 | 28 | 38 | - | - | M3 |
| 16 mm | 34 | 44 | - | 3,5 | 30,5 | 40,5 | - | - | M4 |
| 20 mm | 36 | 46 | 51 | 4,5 | 31,5 | 41,5 | 46,5 | - | M5 |
| 25 mm | 37,5 | 47,5 | 52,5 | 5 | 32,5 | 42,5 | 47,5 | - | M6 |
| 32 mm | 40 | 50 | 55 | 7 | 33 | 43 | 48 | 49,5 | M8 |
| 40 mm | 46,5 | - | - | 7 | 39,5 | - | - | 57 | M8 |
| 50 mm | 48,5 | - | - | 8 | 40,5 | - | - | 71 | M10 |
| 63 mm | 54 | - | - | 8 | 46 | - | - | 84 | M10 |
| 80 mm | 63,5 | - | - | 10 | 53,5 | - | - | 104 | M16 |
| 100 mm | 75 | - | - | 12 | 63 | - | - | 123,5 | M20 |

| Diámetro | N1 | O | P1 | S | T1 | T2 | ØV | W |
|----------|------|------|-----|-----|------|----|----|----|
| 12 mm | 9 | M5 | M4 | 25 | 15,5 | 22 | 6 | 5 |
| 16 mm | 9,5 | M5 | M4 | 29 | 20 | 28 | 8 | 6 |
| 20 mm | 9,5 | M5 | M6 | 36 | 25,5 | 36 | 10 | 8 |
| 25 mm | 11 | M5 | M6 | 40 | 28 | 40 | 12 | 10 |
| 32 mm | 10,5 | 1/8" | M6 | 45 | 34 | - | 16 | 14 |
| 40 mm | 11 | 1/8" | M6 | 53 | 40 | - | 16 | 14 |
| 50 mm | 10,5 | 1/4" | M8 | 64 | 50 | - | 20 | 17 |
| 63 mm | 15 | 1/4" | M10 | 77 | 60 | - | 20 | 17 |
| 80 mm | 16 | 3/8" | M12 | 98 | 77 | - | 25 | 22 |
| 100 mm | 20 | 3/8" | M12 | 117 | 94 | - | 32 | 27 |

Sensores Magnéticos

Tipo Red Switch con LED (2 hilos)



| Descripción | Referencia : CUSS01 | | |
|-------------|-------------------------|---------------------|------------------|
| Contacto | Normalmente abierto | Rango de voltaje | 5 ~ 240V AC / DC |
| Indicador | con Led superior | Rango de corriente | AC 5 ~ 100 mA |
| Temperatura | 0 a 60 °C ~ 32 a 140 °F | | DC 5 ~ 100 mA |
| Protección | IP 67 | Tiempo de respuesta | 0,3 ms |